

Welcome to the **simplicity**
of **sophisticated imaging**

CS 8100 Family



Meet the new **panoramic and cephalometric imaging family**

T: 0800 756 5642 or email ja@digitaldental.co.uk

INTRODUCING THE CS 8100 FAMILY

Effortless high-quality digital results

Outstanding value for money

Sleek, ultra-compact and elegant

[WORKFLOW INTEGRATION]



SOPHISTICATED TECHNOLOGY MADE THOUGHTFULLY SIMPLE

At Carestream Dental, we're redefining panoramic and cephalometric imaging and making a league of our own. The CS 8100 family combines the most advanced, sophisticated imaging technology in an extremely compact and simple system. In fact, it's the intelligence and sophistication that gives you the added simplicity. Like all Carestream Dental products, the CS 8100 family is built on three essential cornerstones: **workflow integration, humanized technology and diagnostic excellence.**

CS 8100 THE SIMPLICITY OF COMPACT PANORAMIC IMAGING

Giving you the best value for money without the added complexity of unnecessary programs or gadgets, the CS 8100 makes positioning easier, image acquisition faster and higher image quality more accessible. Essentially it's exactly what you need to streamline your workflow, improve your usability and make a more accurate real-time diagnosis.

Now the CS 8100 can be upgraded to 3D to meet your future imaging needs (not available on units with cephalometric option).

Perfect for everyday panoramic
and cephalometric needs

"Plug-and-pan" solution –
Easy to install, learn and use

[HUMANIZED **TECHNOLOGY**]

[**DIAGNOSTIC EXCELLENCE**]

CS 8100 RAPID HIGH-QUALITY CEPHALOMETRIC IMAGES

In addition to high-quality panoramic imaging, the CS 8100SC incorporates the world's fastest cephalometric imaging and tracing unit. With a full range of image formats, the CS 8100SC enables a wider range of diagnoses to be performed straight away, making it an ideal choice for everyday orthodontic and oral surgical needs.

AWARD-WINNING DESIGN



The compactness and user-friendliness of the CS 8100 has already been awarded eight international prizes, including the much coveted Red Dot Award product design 2013. The Red Dot jury appreciated, in particular, its compact footprint and slim design that enables it to be placed in almost any practice.

LITERALLY **FITS ANY PRACTICE**



EASILY INTEGRATED AND COMPACT

The simple workflow of the CS 8100 family aligns seamlessly with the current processes of your practice. The system connects via Ethernet directly to your network, and our imaging software can be used as a standalone program or integrated with your existing practice management program.

Furthermore, the ultra compact size of both the CS 8100 and the CS 8100SC means it can easily fit into tight spaces offering

versatile installation possibilities for your practice. For example, the CS 8100SC is one of the smallest cephalometric units available, measuring just 1.8 meter in width.

Both pieces of equipment are delivered in smart packaging for fast and easy installation that can be performed by just one person.



[Humanized **technology**]

We keep our technology simple for you and your patients, always enhancing ease of use and communication.

A PERFECT FIT FOR EVERY PATIENT...



EASILY ADJUSTABLE FOR PATIENTS OF ALL SIZES

Fully wheelchair accessible, the CS 8100 family can be easily adjusted for patients of all ages, standing or sitting. The machine's motorized silent movements provide precise and effortless height adjustments while putting your patients more at ease.

With the CS 8100 family, your patients will appreciate the convenience of a faster, more comfortable exam. And the exam will be safer for them as well, requiring a lower dose compared to traditional panoramic and cephalometric systems.



Stable, open positioning and fast scan times reduce the risk of motion artifact and improves patient comfort.

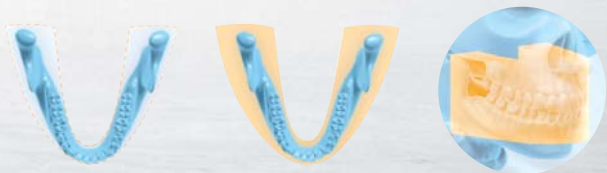
...AND **EVERY** STAFF **MEMBER**



An open design

Face-to-face positioning and transparent patient support with integrated handgrips facilitate proper patient positioning and help your patients feel secure and reduce feelings of claustrophobia or confinement.

The focal trough has an increased thickness in the anterior region, making it easier to place teeth in the sharpness area.



THE RIGHT POSITIONING FOR SUCCESSFUL IMAGES

Combined with enhanced patient comfort, the CS 8100 family offers increased positioning usability for dentists and dental assistants alike.

Simple step-by-step instructions on the modern user interface guide you through the process and minimize errors. Compared to traditional panoramic units, the increased thickness and width of the focal trough eliminates the need for laser beams for the midsagittal and Frankfort planes and provide greater tolerance

to imperfect positioning and challenging anatomy, especially in the anterior area. The enhanced focal trough together with an optimized positioning system, ultimately improves positioning, reduces the risk of retakes and streamlines your workflow even further.

SEE WHAT'S NOT ALWAYS EASILY SEEN

A COMPLETE RANGE OF PROGRAMS FOR EVERY NEED

In addition to four patient morphologies and three jaw shapes, the CS 8100 family gives you the image you want using a complete range of sophisticated acquisition programs. These versatile programs cover all your everyday panoramic exam needs, so that you can get the image you require for a proper analysis and recommendation of treatment. Whether you choose the affordable CS 8100 compact panoramic unit or the CS 8100SC cephalometric system, you will have everything you need for a successful diagnosis.



Standard panoramic – the most common program



Pediatric panoramic reduces the irradiation level



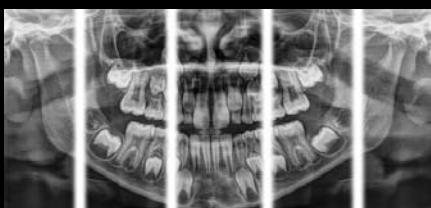
Lateral TMJ 4 views, mouth open and closed on the same image



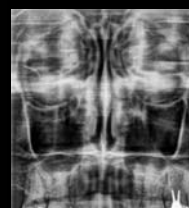
Panoramic without TMJ limits the exposure area for follow-up exams



Lateral TMJ 2 views, mouth open or closed



Segmented panoramic limits patient exposure to the area of interest



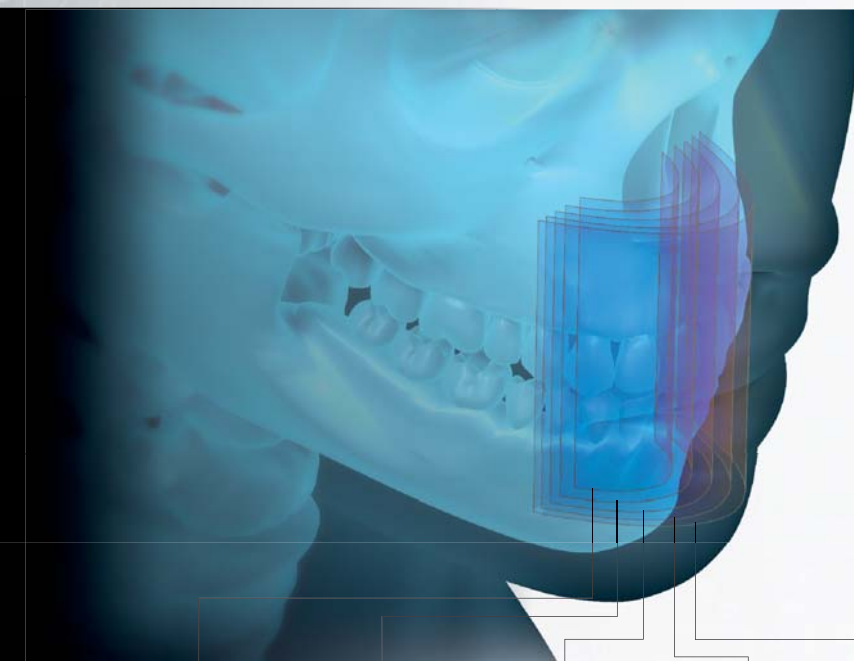
Sinus program for a clear view of maxillary sinuses



[Diagnostic **excellence**]

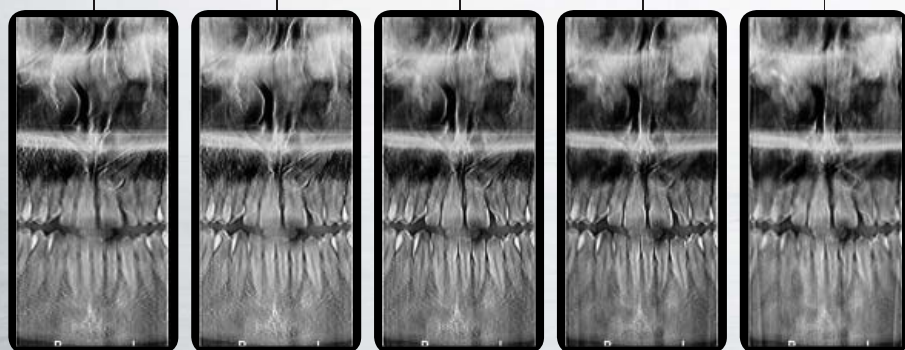
We help you do more than just identify a problem;
we show you exactly where to take action.

SEE MORE WITH OUR INNOVATIVE PROGRAMS



SEGMENTED BITEWING*

- Captures bitewing images in the same way as for caries detection
- Acquires two segments of the arch in one exposure
- Uses a specific trajectory to reduce teeth overlap



BETTER DIAGNOSES WITH EXCLUSIVE 2D+ PROGRAM

Our exclusive 2D+ program** creates results that enable you to see more than what a standard 2D image provides. It focuses on just one area of interest, creating thin slices at regular intervals along the jaw.

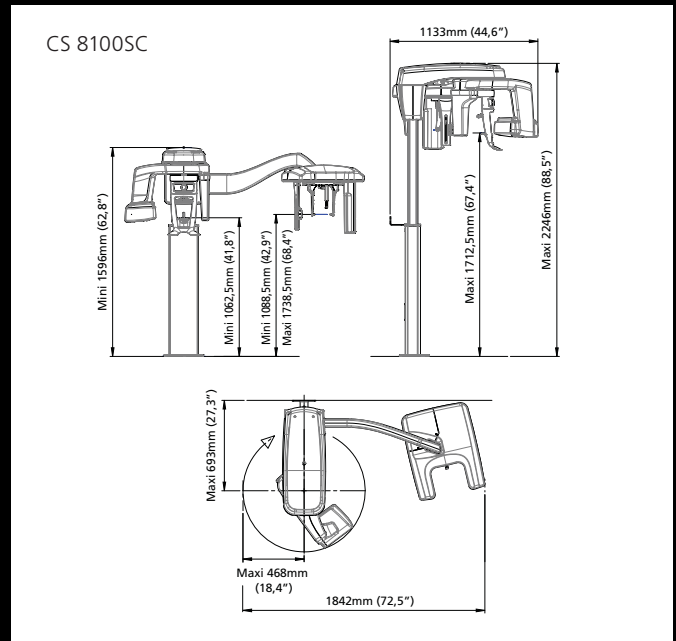
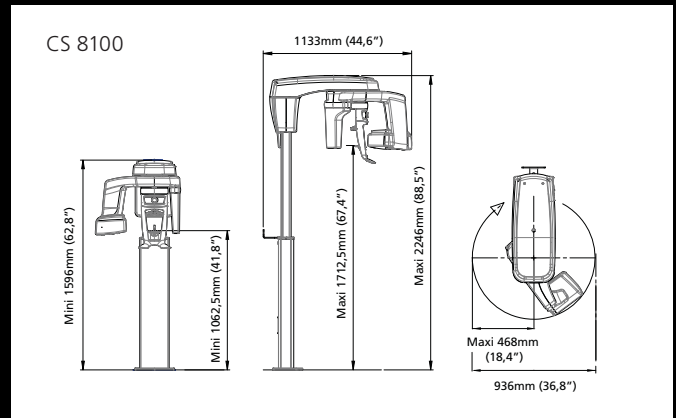
This way of scoping the jaw allows for buccal/lingual exploration. In doing so, it helps you to better determine the location of supernumerary teeth, find impactions and apical lesions, or identify the root relationship to the inferior canal nerve.

* Results obtained with segmented bitewing program cannot be equivalent to a true intraoral bitewing examination

** Not available on CS 8100SC Access

CS 8100 FAMILY TECHNICAL SPECIFICATIONS

X-RAY GENERATOR	
Tube voltage	60 - 90 kV
Tube current	2 - 15 mA
Frequency	140 kHz
Tube focal spot	0.5 mm (IEC 60336)
Total filtration	> 2.5 mm eq. Al
Input voltage (AC)	100 - 240 V - 50/60 Hz
PANORAMIC MODALITY	
Sensor technology	CMOS
Image field	6.4 x 131.2 mm 6.4 x 120 mm (pediatric)*
Gray scale	4096 - 12 bits
Magnification	1.2 (\pm 10%)
Radiological exam	Full panoramic, segmented panoramic, maxillary sinus, LA TMJx 2, LA TMJx 4, 2D+**
Exposure mode	4 patient sizes (Child, Adult: small, medium, large) 3 dental arch morphology (normal, square, sharp)
Exposure time	2 to 12.5 seconds
CEPHALOMETRIC MODALITY	
Sensor technology	CMOS
Image field	6.4 x 263.3 mm
Gray scale	16384 - 14 bits
Magnification	1.13 (\pm 10%)
Radiological exams	Lateral, frontal AP or PA, oblique, submento-vertex, carpus (optional)
Exposure time	3 to 10 seconds
Minimum required space	Without ceph arm: 1200 (L) x 1400 (D) x 2400 (H) mm With ceph arm: 2000 (L) x 1400 (D) x 2400 (H) mm
Weight	Without ceph arm: 72 kg (158 lb.) With ceph arm: 107 kg (236 lb.)



* Not available on CS 8100 / CS 8100 Access

** Not available on CS 8100 Access / CS 8100SC Access



Call 0800 756 5642 for more details
or email ja@digitaldental.co.uk