

YOUR PARTNER IN DIGITAL SUCCESS,

 **PaX-i**



SUPERIOR IMAGES QUALITY

- Optimal image for accurate diagnosis

TWO DEDICATED SENSORS

- Specialized sensors for Pano & Ceph
- Streamlined workflow and prolonged lifespan of sensors

USER-FRIENDLY SOFTWARE, EZDENTI

- A Complete diagnostic and consultation solution

THE ADVANCED IMAGING SOLUTION FOR ACCURATE DENTAL DIAGNOSIS

PaX-i provides the most precise and high quality panoramic image by combining imaging processing and accumulated experience in dental imaging from VATECH. This will improve your diagnostic accuracy with increased treatment planning and patient satisfaction.



NEW STANDARD OF PANORAMIC IMAGE

A clear and sharp panoramic image brings you better diagnostics. Advanced details, especially in the anterior and dental roots can be easily viewed with the PaX-i. These consistently high quality images are the new standard of panoramic imaging.



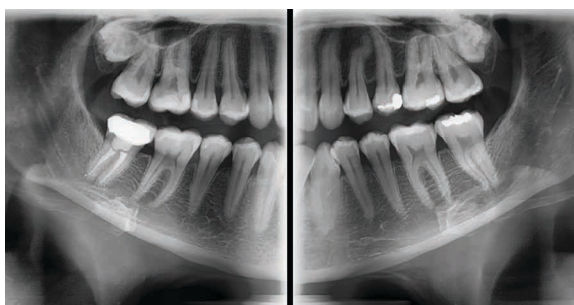
TWO DEDICATED SENSORS

PaX-i offers two dedicated and embedded sensors for Pano and Ceph. This not only allows you to capture an optimal image from each sensor but it also creates efficient workflow.

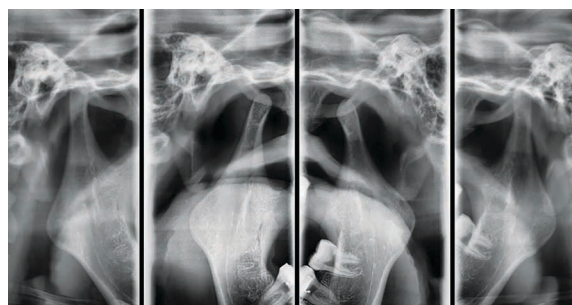


MAKE YOUR DIAGNOSIS EASY AND EFFICIENT WITH VARIOUS CAPTURE MODES

The PaX-i has various capture modes to meet your diagnostic needs. You can choose any capture mode based on your diagnostic needs.



Bitewing Mode



TMJ Mode

SELECTION	ARCH	EXAMINATION MODE
PANO EXAMINATION	Narrow / Normal Wide / Child	Standard / Right / Front / Left
	Orthogonal	Orthogonal Standard / Right / Front / Left Bitewing Standard / Right / Front / Left
SPECIAL EXAMINATION	Normal	TMJ LAT Open / Close TMJ PA Open / Close Sinus LAT / PA

PRODUCT CONFIGURATION

	PANO	CEPH	
		SCAN	ONE SHOT
PaX-i	•	—	—
PaX-i SC	•	•	—
PaX-i OP	•	—	•

SPECIFICATIONS (PaX-i : **PCH-2500**)

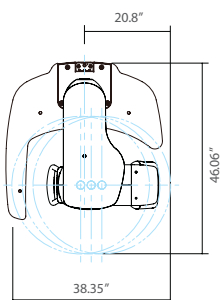
Function	Pano + Ceph	Ceph FOV Size	SC 8.3"X9.1" [LAT, PA, SMV, Waters View, Carpus] 10.6"X9.1" [Full LAT]
Scan Time	Pano : HD 13.5sec / Normal 10.1sec Ceph : Scan 12.9sec / One-shot 0.9sec		OP 12"X10" [LAT, PA, SMV, Waters View, Carpus]
Focal Spot	0.5mm	Gray Scale	14 bit
Tube Voltage/ Current	50-90 kVp / 4-10 mA	Patient Positioning	Standing / Wheel-Chair Accessible

DIMENSIONS

PaX-i

Pano

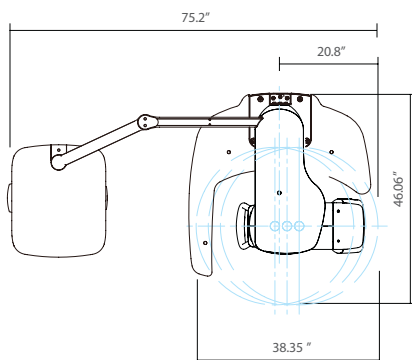
TOP VIEW



PaX-i SC

Pano / Scan Ceph

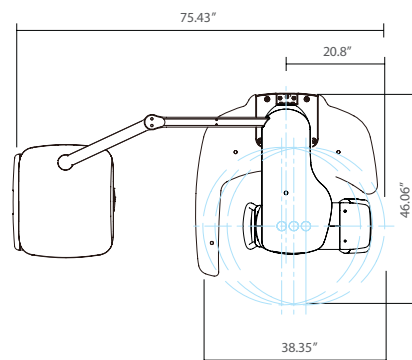
TOP VIEW



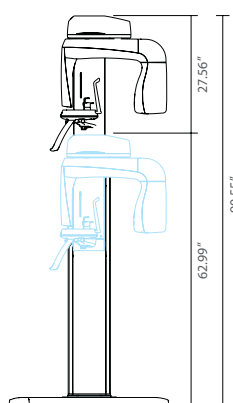
PaX-i OP

Pano / One Shot Ceph

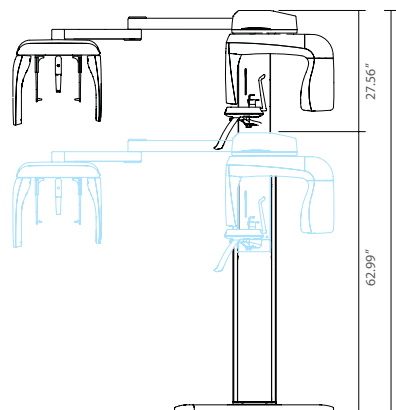
TOP VIEW



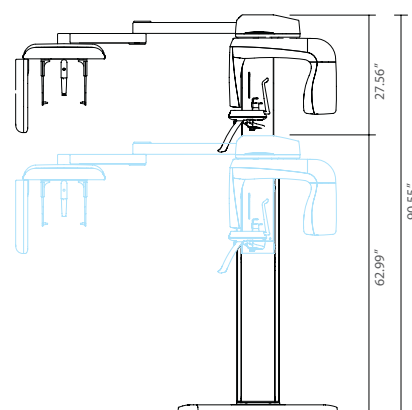
FRONT VIEW



FRONT VIEW



FRONT VIEW



For more information call 0800 756 5642 or email: ja@digitaldental.co.uk